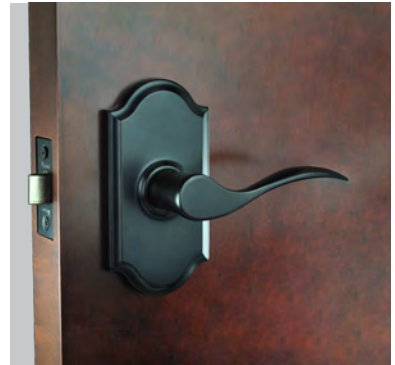


Nidus



The Door Hardware Alternative

Matte Black Range

Limited Guarantee: 10 years mechanical. 12 months for finish.



Marino square matte black
Latch not included
MSQMARPAS-BL
Suits 50mm cross-bore hole
Order Latch separately



Marino round matte black
Latch not included
MMARPAS-BL
Suits 50mm cross-bore hole
Order Latch separately



Cabinet pulls - matte black

CAB-SQ2-96-BL
(96mm centres, 129mm overall)

CAB-SQ2-160-BL
(160mm centres, 192mm overall)

CAB-SQ2-320-BL
(320mm centres, 352mm overall)



Privacy snib turn set - round
Including bolt, matte black
BPRI-1-BL



Privacy snib turn set - square
Including bolt, matte black
BSQPRI-1-BL



Cabinet pulls - matte black

CAB-SQ1-128-BL
(128mm centres, 154mm overall)

CAB-SQ1-192-BL
(192mm centres, 224mm overall)



Euro cylinder escutcheon set
Round backplates, matte black
MEESC52-BL



Tubular latch matte black
Double sprung, soft closing
LATDS60-BL



Spectrum robe pull - matte black

SRP-1-BL
50 (H) x 70 (W) x 23 (D)



Privacy bolt matte black
4mm spindle cam.
PL60-BL



Cupboard knob - matte black

CAB-SQ4-BL
30(H) x 25 (W) x 30 (D)



Flush pulls - Contemporary style,
matte black
FPCRAD-BL (radius edge)
FPCREC-BL (rectangular)

Matte Black Range - OZI Lock Entrance Combos

OZI-4 Deadlatch Combo



3 functions in 1 lock

- Double cylinder deadlatch (locked both sides)
- Secure latch function -pull door shut from outside, open door with snib turn from inside.
- Snib can be set to "hold back" function



OZI-4 Deadlatch combo matte black
CDL-888-O-REC-BL (non handed)
- 600mm pull handle set
- Inside snib plate 145x40x3mm
- Outside escut. plate 145x40x3mm

OZI-3 Roller Mortice Combo



3 functions in 1 lock

- Double cylinder deadbolt (locked both sides)
- Nightbolt (inside turn snib locking).
- Roller catch passage function
- One handed entry (key retracts bolts and latch)



OZI-3 Roller Mortice combo matte black
CRL-826-OL-REC-BL (left hand)
CRL-826-OR-REC-BL (right hand)
- 400mm pull handle set
- Inside snib plate 120x30x3mm
- Outside escut. plate 120x30x3mm

Limited Guarantee:
10 years mechanical.
12 month for finish.



OZI-1 Lever on Longplate Combo

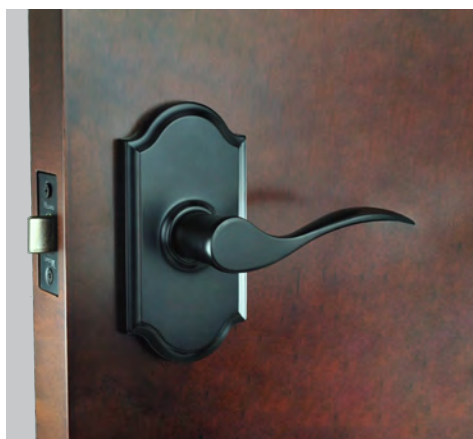
3 functions in 1 lock

- Double cylinder deadbolt (locked both sides)
- Nightbolt (inside turn snib locking).
- Latch passage function
- One handed entry (key retracts bolts and latch)

OZI-1 Marino combo matte black
CLP-MAR-OL-BL (Left hand)
CLP-MAR-OR-BL (Right hand)

Weslock Bronze Range

WESLOCK. SECURITY, SAFETY & STYLE.



Functions:

- Entrance keylock
- Double Cylinder Deadbolt
- Passage lever
- Privacy lever
- Dummy lever

Suits 54mm crossbore hole

Finishes:

ORB = Oil Rubbed Bronze.

Limited Guarantee:

10 year mechanical.

5 year finish

Features:

5-Pin Cylinder

C4 Keyway

Exceeds ANSI A 156.2 Grade 2 lock standards

Cylindrical Door Locks

Removable knob/lever prevents scratching during installation

Panic-Proof keylock/privacy– one turn of interior knob/lever unlocks & opens door

Push button locking in rosette

Adjustable 60/70mm latch with removable faceplates

Suits 54mm crossbore hole



Elegance Woodward
Double Cylinder Deadbolt
Oil Rubbed Bronze



Elegance Premiere
Double Cylinder Deadbolt
Oil Rubbed Bronze



Utica Lever
(rectangular backplate)
Oil Rubbed Bronze



Bordeau Elegance Lever
(arched backplate)
Oil Rubbed Bronze



Traditionale Model 672
Double Cylinder Deadbolt
Oil Rubbed Bronze



Traditionale Model 672
Double Cylinder Deadbolt
Oil Rubbed Bronze



Bordeau Traditionale Lever
(round backplate)
Oil Rubbed Bronze



Julienne Knob
(round backplate)
Oil Rubbed Bronze

Mediterranean Levers



Description:

63mm rosette - suits 50mm crossbore hole.
Square and round backplate designs.

Functions:

Passage set for hallways & non locking doors.
Privacy function with snib function for bedrooms and bathrooms using a privacy adaptor.
Dummy lever function for closets and robes.
For entrance function, see section on external security.

Finishes:

SC = Satin Chrome.
CP = Polished Chrome.
BC = Brushed Chrome
PB = Polished Brass (Capri, Altro, Roma only)
PVD-BN = PVD Brushed Nickel (Rialto only)

Limited Guarantee:

10 years mechanical.
5 years for general finishes.
15 years for PVD-SN finish.
(Further details of Guarantee available on Nidus Website.)

Privacy function Options (for bedrooms & bathrooms):

Specify a privacy snib turn set with privacy bolt for installation in a separate hole below the passage lever set. Alternatively, specify a privacy conversion kit which converts a passage lever set to a privacy function (snib on rosette).



Marino SC, CP, BL



Rialto SC, CP, PVD-BN



Domici SC, CP, BC



Turin SC, CP, BC



Metro SC, CP



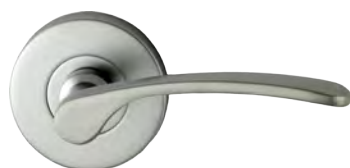
Metro Square SC, CP, BC



Altro SC, CP, PB



Roma SC, CP PB



Capri SC, CP, PB



Corsica SC, CP



Round
Euro
Escutcheon



Square
Euro
Escutcheon



Privacy snib
turn set
(round) with
privacy bolt



Privacy snib
turn set
(square) with
privacy bolt



Privacy
Conversion Kit
(converts passage
set to privacy
function)

Stainless Steel Levers (304 grade)



Description:

Square and round backplate designs.
60mm round mounting rosette - suits
54mm crossbore hole.

Functions:

Passage set for hallways & non locking doors.
Privacy function with snib function for bedrooms and bathrooms using a privacy adaptor.
Dummy lever function for closets and robes.
For entrance function, see section on external security.

Finishes:

SS = Stainless Steel.

Limited Guarantee:

10 year mechanical.
5 year finish* (*refer to cleaning and general care instructions).
(Further details of Guarantee available on Nidus Website.)



Berlin SS



Berlin Square SS



Soho SS/PSS



Soho Square SS



Dublin SS



Privacy Snib Turn Set SS - square backplate design (Privacy Bolt supplied separately).



Sienna SS



Cylinder Escutcheon SS , square backplate design, to suit Euro or Oval cylinder.



Paris SS

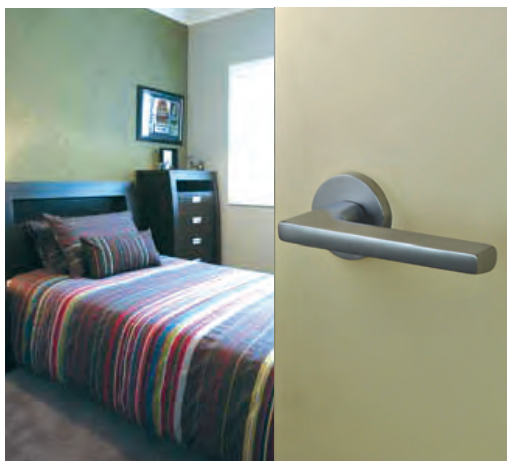


Privacy Snib Turn Set SS - round backplate design (Privacy Bolt supplied separately).



Cylinder Escutcheon SS , round backplate design, to suit Euro or Oval cylinder.

Colombo Design Italian Levers



Description:

Designed and manufactured in Italy by Colombo Design.
50mm rosette - suits 16-25mm hole with 2 x 7mm screw holes.

It is recommended that Colombo Design door levers are installed with the Jackson JM60 heavy duty mortice latch.

Functions:

Passage set for hallways & non locking doors.

Privacy function with snib function for bedrooms and bathrooms using a separate privacy snib turn set below the passage set.

Dummy lever function for closets/robes.
For entrance function, see section on external security.

Finishes:

SC = Satin Chrome.

CP = Polished Chrome.

PB = Polished Brass.

HPS/1 = PVD Satin Nickel.

Limited Guarantee:

10 year mechanical.

5 year for general finishes.

30 year for HPS/1 (PVD-SN).

(Further details of Guarantee available on Nidus Website.)



Roboquattro Square SC



Roboquattro Round SC



Gira SC



Blazer HPS/1



Viola SC



Milla SC/CP



Meta CP



Mach SC



Robotre SC



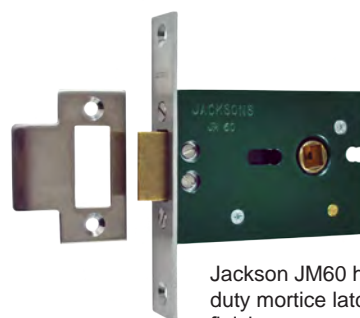
Robodue SC, CP, PB



Robot SC, CP, PB



Escutcheons
(available to suit both Euro and Oval cylinders).



Jackson JM60 heavy
duty mortice latch SS
finish



Privacy snib turn set
(privacy bolt sold
separately) for
bedrooms and
bathrooms. Features
inside snib locking and
outside emergency
release).

Project Series Key in Lever Range



Lonsdale combination trim set featuring key in lever set with inside snib locking, and double cylinder eurobolt set, polished chrome finish.

“Project Series” Key in Lever

- Lever Entrance, Passage, Privacy functions
- Double Cylinder Euro Deadbolt.
- Available in Brushed Nickel, Polished Chrome and Matte Black (Square only) finishes.
- Latch included to suit 60mm backset.
- Round and Square Rosette designs.
- Suits up to 54mm crossbore hole.



Lonsdale square backplate key in lever



Lonsdale round backplate key in lever



Lonsdale square backplate privacy set



Lonsdale round backplate privacy set



Lonsdale square backplate passage set



Lonsdale round backplate passage set

Gibson 3 in 1 Entrance lock



Fits 2 x standard 54mm crossbore holes.

3 functions:

- Passage Set.
- Entrance keylock with inside snib function.
- Double cylinder deadbolt (key both sides).



Lonsdale square euro deadbolt (also available in round backplate)



Lonsdale round euro single cylinder Deadbolt showing inside turn snib.



Lonsdale lever privacy set - detail of inside snib turn



Lonsdale square euro single cylinder Deadbolt showing inside turn snib.

OZI-1 Lock Combos



Inside View, OZI 1 mortice lock with Nidus Turin lever on longplate (right hand) with satin chrome (SC) finish.

OZI-1 Mortice Lock with Nidus Lever on Longplate

For entrance hinged doors

Australian Made Mortice Lock

Ideally suited to Nidus lever on longplate ranges.

3 functions in 1 lock:

- Double cylinder deadbolt.
- Nightbolt (inside snib locking).
- Passage function.

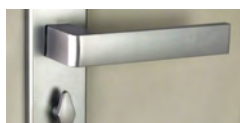
- 60mm and 46mm backset models.
- single handed entry (key retracts bolts & latch).
- Standard or rebated striker kits available.



Nidus Mediterranean lever on longplate options:



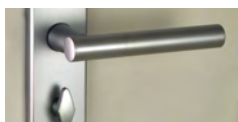
Rialto Lever,
SC, CP, PVD-BN



Turin Lever
SC, CP, BC



Metro Lever
SC, CP



Domici Lever
SC, CP, BC

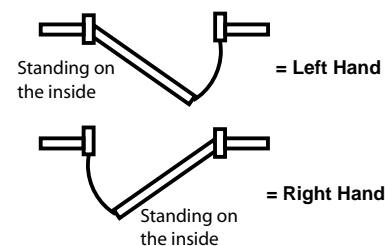


Marino Lever
SC, CP



Altro Lever
SC, CP, BC, PVD-PB

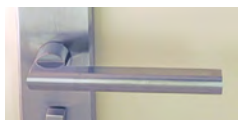
Handing Information



Limited Guarantee:

10 year mechanical.
5 year finish.
(Further details of Guarantee available on Nidus Website.)

Nidus Stainless Steel lever on longplate options:



Soho Lever
SS



Berlin Lever
SS

Finishes:

SC = Satin Chrome.
CP = Polished Chrome.
BC = Brushed Chrome
SS = Stainless Steel.
PSS = Polished Stainless Steel.

PVD-BN = PVD Brushed Nickel with extended warranty.
PVD-PB = PVD Polished Brass with extended warranty.



OZI 1 mortice lock with Nidus Berlin lever on longplate, right hand, stainless steel

OZI-2 Lock Combos



Inside View, OZI 2 sliding mortice lock with Nidus snib turn escutcheon set satin nickel (SN) finish, and PH826 195mm stainless steel pull handle set.

OZI-2 Sliding Door Mortice Lock with Nidus Accessories and Entry pull handle set.

For external sliding doors with entry pull handles.

Australian Made Mortice Lock

Ideally suited to Nidus Accessories and pull handles.

3 functions in 1 lock

- Double cylinder deadbolt
- Nightlatch (inside turn snib locking)
- 46mm backset model only
- One handed entry (key retracts bolt).
- Standard or rebated striker kits available.
- Stainless steel or polished stainless steel finishes.



OZI-2 Sliding Door Mortice Lock Combo Set includes:

- OZI-2 mortice lock 46mm backset
- OZI-2 standard striker and face plate kit
- Double euro cylinder
- OZI-2 snib turn/escutcheon set
- PH 826 -195mm length stainless steel entry pull handle set.



OZI-2 mortice lock with standard striker and face plate kit



Detail of the OZI-2 mortice locking claws.

Limited Guarantee:

10 year mechanical.
5 year finish.
(Further details of Guarantee available on Nidus Website.)

Finishes:

SS = Stainless Steel.
PSS = Polished Stainless Steel.



OZI-3 Lock Combos



Outside view, OZI 3 roller mortice lock with Nidus rectangular snib turn escutcheon set satin nickel (SN) finish (right hand), and PH826 400mm stainless steel pull handle set.

OZI-3 Roller Mortice Lock with Nidus Accessories and Entry pull handle set.

For external hinged and pivot doors.

Australian Made Mortice Lock

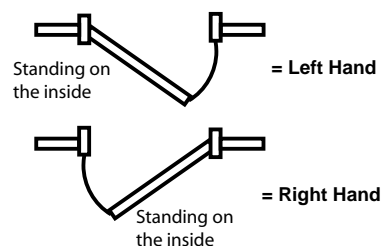
Ideally suited to Nidus Accessories and pull handles.



3 functions in 1 lock

- Double Cylinder Deadbolt
- Nightbolt (inside Turn Snib locking)
- 60mm and 46mm backset models
- One handed entry (key retracts bolt and latch).
- Standard or rebated striker kits available.
- Stainless Steel or Polished Stainless Steel finishes.

Handing Information



OZI 3 Snib Escutcheon Options:



"Rectangular snib set"

CRL-826-OR-REC-SS
(right handed model pictured)



"Radius snib set"

CRL-804-OR-RAD-SS
(right handed model pictured)



"Original snib set"

CRL-826-OR-SS
(right handed model pictured)

OZI-4 Lock Combos



OZI-4 Deadlatch Mortice Lock with Nidus Accessories and Entry pull handle set.

For external hinged and pivot doors.

3 functions in 1 lock

- Double Cylinder Deadlatch (lockable from both sides of door)
- Snib turn latch unlocking from inside when not deadlatched.
- Snib turn hold back function



Double Cylinder Deadlatch (locked both sides)

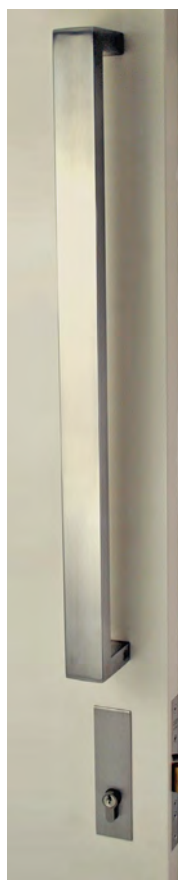


Snib can be set to "hold back" function

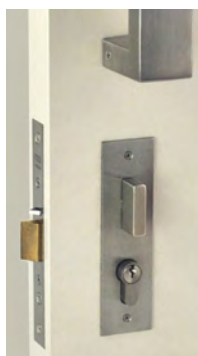


Secure latch function - Pull door shut from outside, open door with snib turn from inside.

- Australian Made Mortice Lock
- Non handed
- 60mm backset model only
- One handed entry (key retracts latch)



CDL-888-O-REC-SS
- 600mm pull handle set
- Inside snib plate 145x40x3mm
- Outside escut. plate 145x40x3mm



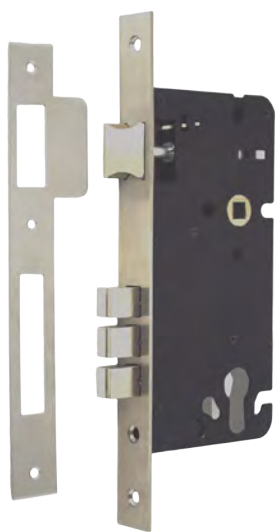
CDL-888-O-REC-BL
- 600mm pull handle set
- Inside snib plate 145x40x3mm
- Outside escut. plate 145x40x3mm



Entrance Security Locks

Mortice Lock

- Triple bolt with double security throw.
- Ideally suited to Nidus Mediterranean lever on longplate products.
- 60mm and 45mm backsets available.
- 85mm handle centre to keyhole centre measurement.
- Use with double euro cylinder or single euro cylinder with thumbturn.



MLW60SC mortice lock.



Double euro cylinder
(key both sides)



Single euro cylinder
with inside snib turn



Nidus euro cylinder mortice lock with
Nidus Mediterranean lever on longplate
(Metro) in satin chrome finish.

Eurobolt



Eurobolt (Round)



Eurobolt (square)

Adjustable 60/70mm latchbolt.
Slim-line design, matches most lever rosette styles.
Round and Square Rosette designs.
Available in Polished Chrome, Satin Chrome, Satin
Nickel, and PVD gold finishes.
Single and double cylinder models available.

Keylock and Deadbolt



Entrance Keylock



Double Cylinder Deadbolt

Grade 3 keylocks and deadbolts.
60mm backset.
304 grade Stainless Steel.
Available in Stainless Steel and Polished Stainless
Steel finishes.

Stainless Steel Entry Pull Handle Sets - 304 Grade Tubular



PH826-400mm-SS pictured with
OZI-3 Roller Mortice Combo set.



PH888-SS
PH888-PSS
600x40x20mm



PH863-SS
600x30mm



PH823-SS
600x30mm



PH836-SS
600x32mm



PH834-SS
PH834-SS/PSS
800x38x38mm
1200x38x38mm
PH834-PSS
1200x38x38



PH803-SS/PSS
840x32mm



PH826-SS
800x38mm
1200x38mm



PH804-SS
300x25mm
500x32mm
900x32mm



PH826-SS
195x30x15mm
400x30x15mm
600x30x15mm
PH826-PSS
400x30x15mm
195x30x15mm

Note: All Pull handle Sets above are sold as back to back pairs.
Ideal for use with the Nidus OZI Mortice locks (see pages 11 & 12).

Colombo Italian Entrance Pull Handles - Solid Brass Material



Square HPS/1 pull handle installed with OZI-4 Deadlatch mortice lock and Nidus accessories.

Designed and manufactured in Italy by Colombo Design. Pull handles can be supplied as back to back, single face fix, and through the door fix, depending on the fixing kit chosen. These pull handles are ideal for entrance doors that are fitted with the OZI-3 Roller mortice lock (see external security - page 5).



Square SC,HPS/1
304mm length.
70mm projection.
250mm hole centres.



Flessa SC,CP
278mm length.
100mm projection.
247mm hole centres.



Zen Straight SC,CP
500mm length.
70.5mm projection.
300mm hole centres.



Zen Curved SC,CP
496mm length.
70.5mm projection.
300mm hole centres.



Noa Straight SC,CP
500mm length.
70.5mm projection.
300mm hole centres.



Noa Curved SC,CP
495mm length.
70.5mm projection.
450mm hole centres.



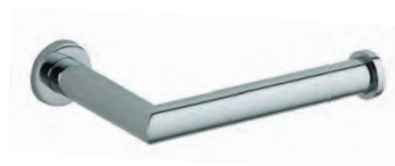
Limited Guarantee:

10 year mechanical.
5 year Finish.
(Further details of Guarantee available on Nidus Website.)

Finishes:

SC = Satin Chrome.
CP = Polished Chrome.
HPS/1 = PVD Satin Nickel.

Nidus "Orbit" Bathroom Accessories



692 CHR Toilet Roll Holder



694 CHR Tumbler Holder

The "Orbit" bathroom accessories range is only currently available in Polished Chrome finish (CHR).



6950 CHR Soap Dish



6970 CHR Robe Hook



699-600 CHR 600mm Single Towel Rail
699-750 CHR 750mm Single Towel Rail
699-900 CHR 900mm Single Towel Rail



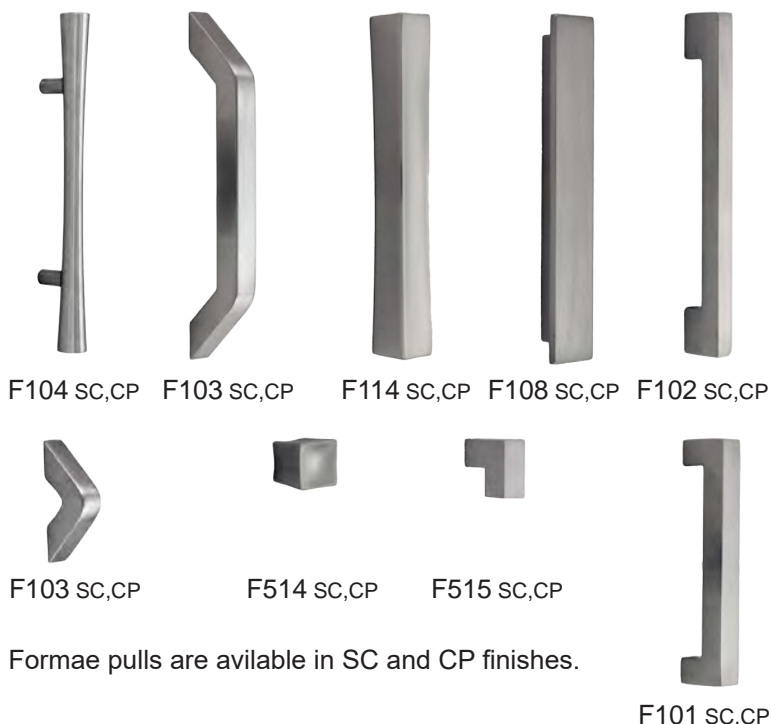
693 CHR Guest Towel Ring

Cabinet knobs and Pull Handles



CABPRO-128-SS and CABPRO-192-SS stainless steel pull handles.

Colombo "Formae" Italian Cabinet Pulls



Formae pulls are available in SC and CP finishes.

F101 SC,CP

Stainless Steel Cabinet Hardware



CABSS07 ss



CABSS04 ss



CABSS01 ss



CABSS03 ss



CABPRO ss,PSS



CABSS02 ss



Corona CWK
SC, CP, GD
Also available as a passage set.

Robe Pulls



Spectrum SRP1
SC, SN, CP, BL



Wentworth WWK
SC, CP, GD
Also available as a passage set.

Cabinet knobs and pulls



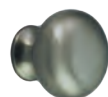
CABSQ2 SN, BL



CABSQ1 SN, BL



CABFB SN,CP



CABMK30
SN,CP,PB



CABFB30
SN,CP,PB



CABFK25
SN,CP,PB



WWCK
SC, CP, GD



CABSQ4
SN,CP, BL



CABEC18
SN,CP

Finishes:

SC = Satin Chrome SS = Stainless Steel
CP = Polished Chrome SN = Satin Nickel
PB = Polished Brass GD = Titanium Gold

Accessories

Flush Pulls



FPCREC
SC,CP,BL

FPCRAD
SC,CP,BL

FPREC
SC,CP,PB

FPRAD
SC,CP,PB

FPSQ1
SS,PSS

FPRD1
SS,PSS

FPSQ2
SS,PSS

Cavity Sliding Door Accessories



CSDPRI-SQ
privacy set
SS, BL finishes



CSDPRI-RD
privacy set
SS, BL finishes



CSDPAS
passage set
SS, *PSS/SS



CSDPAS-RD
passage set
SS, *PSS/SS



FINGERPULL
BN, CP

*PSS/SS - The PSS model is polished in all areas except the recessed circular area of the flush pull, which remains as a stainless steel finish.

Door Stops



DSWM4
SC,CP



DSWM2
SC,CP,PB



DSWM1
SC,CP,PB,BL



DSEXT1
SC, CP



DSPL1
SC,CP,PB



DSMAG1 CP



DSFM1
SC,CP,PB



DSWM5 SS, PSS, BL



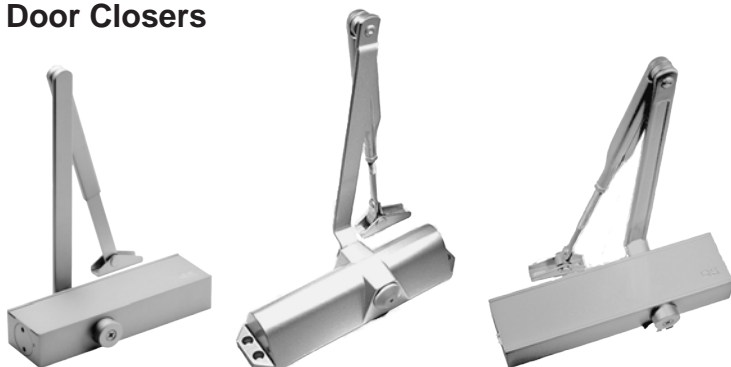
DSFMRIS
SC,CP,PB

Finishes:

SC = Satin Chrome
CP = Polished Chrome
PB = Polished Brass
GD = Titanium Gold
NP = Nickel Plated
BL = Matte Black
SS = Stainless Steel
PSS = Polished Stainless Steel
SN = Satin Nickel
BSC = Brushed Satin Chrome
BSN = Brushed Satin Nickel

Accessories

Door Closers



BB-QS700

BB-QS680

BB-QS750

Hinges - Stainless Steel 304



H100X75
SS,PSS, BL

H85X60
SS,PSS,BL

Flush Bolt



FP6 (150mm)
SS,PSS,PB

Privacy Snib Turn set



BPRI CP,SC,PB
* includes bolt

PL60-4 SC,PB, BL
* bolt only

Privacy Indicator Bolt



PIB1 SC, CP, PB

Latches and Catches



LATDS60
SC,CP,BSC,BSN,PB, BL

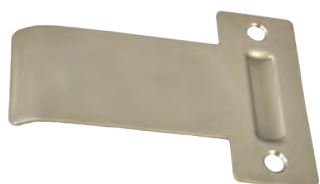
LATDS60 SS
7.6 or 8.0mm cam



LATREB SC,CP,PB
Latch rebate kit



RB1-SS-V
Heavy duty roller latch
Stainless steel finish



RB1-85STRIKER-SS-V
Extended striker (85mm) to suit
RB1-SS-V



BC1 NP
Ball catch

Concealed Magnetic Catch



PLS24PRO

Ideal for wardrobes and closets. Magnetic non interference catch. Includes patented stainless steel housing cup to cover up rough hole edges. Also includes power adjustable packers.

Galaxy Mailboxes

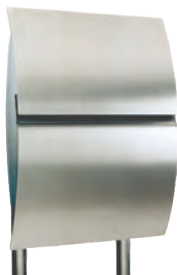


100% 2mm stainless steel
Marine Grade AISI316
Satin brushed finish
Security lock (2 keys).
Wall fixing included.
Accepts A4 size mail (Vega accepts A3)



Capella

Dimensions:
360W x 490H x 130D



Vega

Dimensions:
405W x 535H x 135D



Arcturus

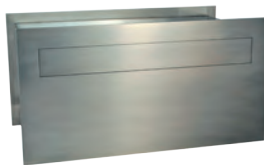
Dimensions:
355W x 535H x 235D



Antares

Dimensions:
340W x 445H x 135D

Galaxy 316 Marine Grade Stainless Steel Mailboxes from Belgium



Centauri

Dimensions:
390W, 200H, adjustable sleeve for variable depth (205-380mm)
2 keys provided for lockable rear flap
Front, back, and Internal Sleeve all 316 Marine Grade Stainless Steel.



Alpha

Dimensions:
230W, 165H, 25D
2 keys provided for Beta lockable flap



Beta

Door Mail system



Plate - Front

Dimensions:
Plate300: 300 x 80mm
(Opening 250 x 40mm)
Plate400: 400 x 100mm
(Opening 330 x 50mm)

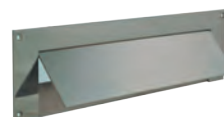


Plate - Back

Dimensions:
Plate300-Back: Not available
Plate400-Back: 400 x 100mm
(Opening 330 x 60mm)



Stand

Dimensions:
315W x 1700H x 38Dia.

